

Nilfisk GM 80 & GM 80i

INSTRUCTIONS FOR USE & PARTS LIST



Table of Contents

Important Safety Instructions	2
Warranty	2
Machine Setup	3
Using the Machine	4
Emptying	4
Disposal	5
Maintenance/Filter Replacement	5
Troubleshooting	6
Loss of Power	
Loss of Suction	
Parts Explosions	7
Accessories	9
Technical Specifications	19
Contact Information	19

For Instructions for Use on HEPA/ULPA filter installation, please refer to the addendum titled, “ABSOLUTE FILTERS – End User Information.”

IMPORTANT SAFETY INSTRUCTIONS

PLEASE READ THESE INSTRUCTIONS COMPLETELY BEFORE USING THE MACHINE. DEPENDING ON LOCAL REGULATIONS AND THE COMPOSITION OF THE MATERIALS YOU HAVE COLLECTED, THERE MAY BE REQUIREMENTS FOR SPECIAL HANDLING AND DISPOSAL OF THE COLLECTED DEBRIS. CONSULT YOUR LOCAL OCCUPATIONAL SAFETY AND HEALTH ADMINISTRATION (OSHA) AND ENVIRONMENTAL PROTECTION AGENCY (EPA) OFFICIALS FOR DETAILS.

CAUTION: This Nilfisk vacuum cleaner or any other vacuum cleaner is not to be used in explosion-hazardous areas, as serious injury could result.

Under no circumstances may this cleaner safely be used for the collection of hazardous or toxic materials unless equipped with a special HEPA(High Efficiency Particulate Air) filter and bag which have been installed according to written instructions from Nilfisk-Advance.

ATTENTION EMPLOYER: Please ensure these Instructions for Use are made available and understood by your employees or any other persons who may use this equipment.

To list all toxic and hazardous materials would be beyond the scope of these Instructions. It is the Employer's responsibility to identify, for Employees' and others' information, hazardous or toxic materials which may be collected by this equipment.

Your new Nilfisk industrial vacuum cleaner is a precision-engineered instrument designed for exceptionally fine filtration. Ordinary vacuum cleaners do not have HEPA filters, and cannot be safely used for hazardous dust collection. This Nilfisk machine is safe to use with fine powders or hazardous materials, as long as certain precautions are taken. Proper care of this cleaner is essential to the maintenance of its ultrafine filtering capabilities.

BEFORE USE: DO NOT ATTEMPT TO OPERATE THIS CLEANER UNTIL YOU HAVE INSTALLED ITS VARIOUS COMPONENTS ACCORDING TO THE FOLLOWING INSTRUCTIONS:

WARRANTY

The Nilfisk companies warrant that Nilfisk equipment will be free of defects in workmanship or material for a period of two years from the date of delivery. Should any failure to conform to this warranty appear, the Nilfisk companies shall upon notification within such time period, correct such non-conformity, at its option, either by repairing any defective part or parts, or by replacing a part or parts provided that the equipment is returned to an authorized Nilfisk service facility. In all cases freight both ways will be at

the expense of the customer. Equipment shall not be returned without advance notice to, and consent of the Nilfisk companies.

EXCEPT AS SPECIFICALLY SET FORTH HEREIN, THE NILFISK COMPANIES MAKE NO WARRANTIES, EITHER EXPRESSED OR IMPLIED AS TO ANY MATTER WHATSOEVER, INCLUDING WITHOUT LIMITATION ANY AND ALL WARRANTIES OF MERCHANTABILITY, FITNESS FOR PURPOSE, OR OTHER WARRANTIES, ALL OF WHICH ARE EXPRESSLY DISCLAIMED AND EXCLUDED. NEITHER PARTY SHALL BE LIABLE TO THE OTHER FOR SPECIAL, INDIRECT, INCIDENTAL OR CONSEQUENTIAL DAMAGES, INCLUDING BUT NOT LIMITED TO LOSS OF PRODUCTION, LOSS OF TIME, LOSS OF PROFITS OR OTHER SIMILAR INDIRECT LOSSES WHICH MIGHT OCCUR AS A RESULT OF DEFECTS, PARTIAL OR TOTAL FAILURE OF THE PRODUCT TO PERFORM AS SPECIFIED.

Correction of non-conformities or defects in the manner and for the period of time provided above, shall constitute fulfillment of all liabilities of the Nilfisk companies to the customer, whether based on contract, negligence or otherwise with respect to, or arising out of such equipment. The remedies set forth herein are exclusive, and the liability of the Nilfisk companies with respect to this sale or anything done in connection therewith, whether in contract, in tort, under any warranty, or otherwise, shall not except as expressly provided herein, exceed the price of the equipment or part on which such liability is based.

The warranty does not cover repairs due to normal wear and tear, accident, neglect, misuse or abuse, incorrect installation or use other than as described in the instruction booklet. Breaks in hoses and cables are not covered. This warranty is rendered void if the motor number plate is removed or defaced or if repairs are made or attempted by persons not authorized by the Nilfisk companies.

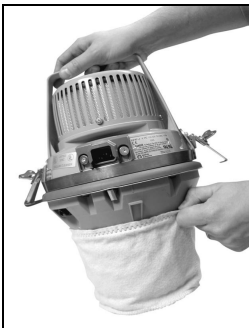


Photo 1



Photo 2

MACHINE SET-UP:

Before turning on the motor: Install the microfilter (#616821-Felt, #017230-AES Polycomposite, #017220-01-Gore-Tex®), the small felt sock, on the bottom of the motor by sliding the filter over the motor bottom, and covering as much of the bottom as the depth of the filter will permit (photo 1). Be sure the filter's elastic collar holds the filter snugly in place and is as high up on the motor bottom as possible.

2. Next, mount the HEPA filter (#01710440) according to the accompanying bulletin. Place the motor back in the cavity in the top of the cleaner (photo 2). Fasten the motor head in place using

either the positive twist safety latches or the standard latches, depending on which option you purchased.



Photo 3



Photo 4

. Installing the Polyliner and Paper Bag: Twist and release the two positive twist safety latches, or the standard latches, depending on your machine. They are located on the body of the container, front and back. Lift off the top. Open the polyliner and place in the bottom of the container with its walls flush against the container sides and lipped under the container inlet (photo 3). The excess length of polyliner is draped over the top of the container and down the outside then rolled at the end to permit the container clips to close.

Install a paper bag inside the polyliner according to the illustrations printed on the paper bag itself (photo 4). Replace the top container and fasten the two clips.

4. The GM 80 and GM 80i offer a package of standard accessories that can be connected in the following manner. Affix the vacuum hose to the vacuum by inserting it into the orifice on the lower container. Once it is inserted, rotate the inlet coupler a quarter turn to lock it into place. Either of the two straight 22 inch wands can be fitted to the other end of the hose. You can connect the combination floor nozzle or 5 inch upholstery nozzle to the end of the hose. The rubber crevice nozzle and the 3 inch round brush can be connected to the end of the straight wand or the curved steel tube of the hose. There is a list of optional accessories that can be supplied for both models. Please consult your District Sales Manager or the Customer Service Department at (800) NILFISK for a list of optional accessories.



Photo 5

USING THE MACHINE:

Starting and stopping: Press the gray button on the upper front portion of the vacuum (photo 5).

Correct use of the machine: This machine is not a wet/dry vacuum. It is intended for dry collection only. Do not use this vacuum to pick up liquids, or any wet materials.

EMPTYING:

IF THIS VACUUM CLEANER IS USED TO COLLECT HAZARDOUS MATERIAL, DO NOT ATTEMPT TO OPEN OR EMPTY ITS CONTENTS WITHOUT PERSONAL PROTECTIVE CLOTHING AND RESPIRATORY PROTECTION.



Photo 6

To empty the container and its contents, first turn off the motor. Allow the cleaner to sit undisturbed for at least thirty (30) seconds. Then twist and release the container clips. Once the seal is broken, turn on the motor again. This will prevent ultrafine particles which are still suspended in the air inside the container from escaping into the work place. Lift off the container top. Remove the polyliner and paper bag within it (photo 6). Then seal off the polyliner with the paper bag inside and install a new polyliner and paper bag according to step 2, Machine Setup.

DISPOSAL:

Depending on local regulations, and the composition of the material you have collected, there can be a requirement for special handling and labeling of the filled and sealed plastic bags. Consult your local Occupational Safety and Health Administration (OSHA) and Environmental Protection Agency (EPA) official for details.

MAINTENANCE

Routine Maintenance:

To ensure maximum performance of your Nilfisk vacuum cleaner, be sure to check your main filter regularly. Your filter may need to be shaken out to remove caked dust from time to time.

Filter Replacement:

To ensure that your Nilfisk vacuum cleaner delivers the years of trouble-free operation for which it was designed, it is necessary to check and replace filters regularly.

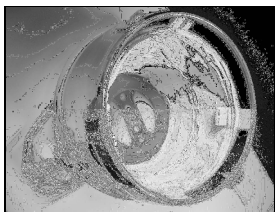


Photo 7

1. Main Filter: The large napped cotton bag which is semi-permanently mounted inside the container will not require frequent replacement. The main filter must be replaced when the cleaner no longer develops powerful suction, yet bags are not full and other filter components are not clogged. Extend main filter service life by frequent changes of disposable polyliners and paper bags (photo 7).

2. **Microfilter:** This small polyester felt sock, which fits over the motor bottom will require periodic inspection. Dust will discolor the microfilter. Change the microfilter as soon as any discoloration is easily noticeable. Do not shake this microfilter since this can cause liberation of potentially harmful microscopic dust into the air. Carefully remove and discard with collected debris in the sealable poly bag. If equipped with a Gore-Tex microfilter, the same rules for periodic inspection and disposal apply. The Gore-Tex microfilter, which features a clamp that holds it in place, must be changed when any abrasions, damage or heavy discoloration is noticed on the surface of the filter (refer to photo 1).



Photo 8

3. **HEPA or ULPA Exhaust Filter:** This cartridge is mounted on the top of the motor, outside the container. If the main filter and microfilter are properly maintained, the glass fiber element in the exhaust filter should perform satisfactorily for a minimum of one year. It cannot be renewed or restored. Exact life will depend upon frequency of use and amount and type of material collected. Normally four changes of microfilter equal one change of HEPA/ULPA filters. Remove the protective metal casing and replace the pleated glass fiber cartridge according to the accompanying instructions (photo 8). Cartridges must be replaced more frequently if the vacuum cleaner has had unusually heavy use, or if the various pre-filters have been neglected.

CAUTION: Use only genuine Nilfisk replacement filter components. The use of substitute components could pose a grave risk of personal exposure, and will cause all equipment warranties to be void.

TROUBLESHOOTING

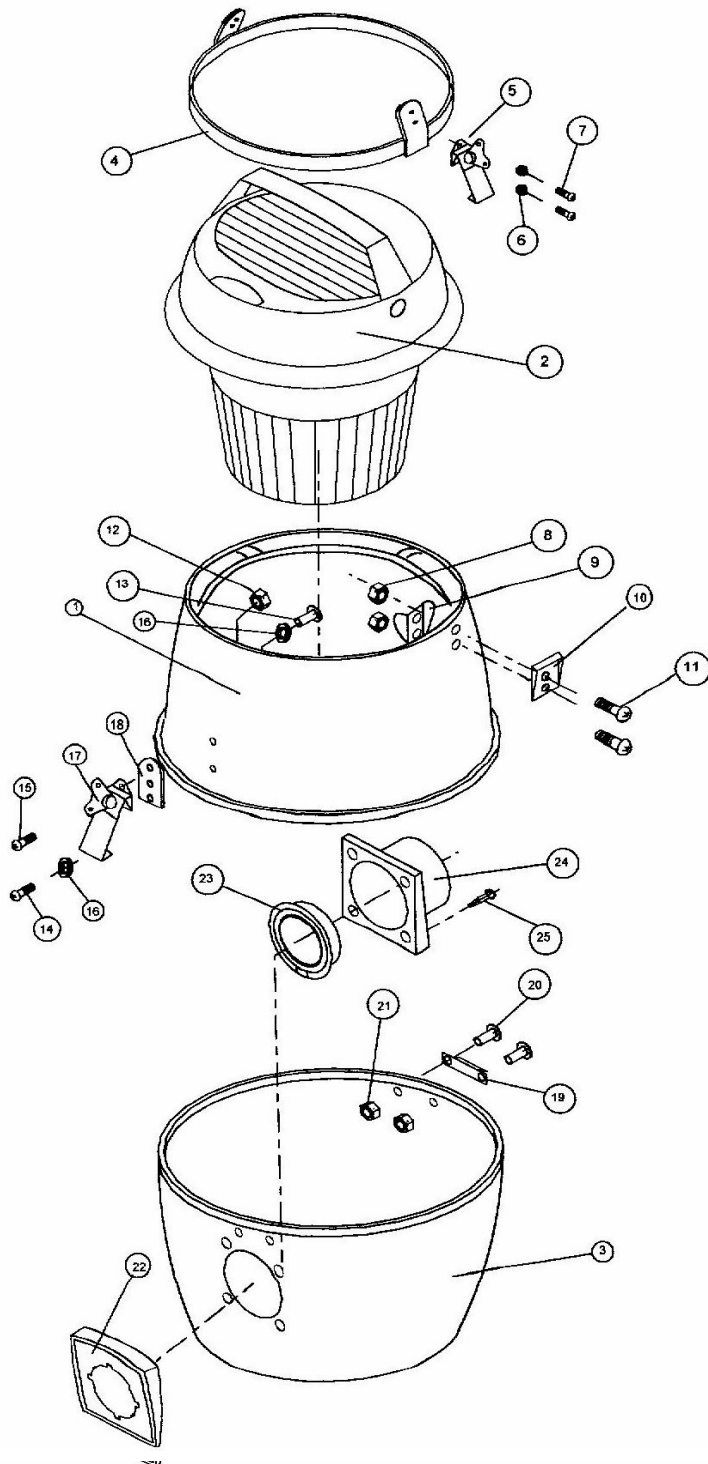
Loss of Power:

1. Make sure the power cord is properly fastened to the motor head, and it's properly plugged into the socket.
2. Be sure the electrical circuit has not blown a fuse.
3. If the circuit is functioning properly, but there is still no power, contact the Nilfisk Customer Service Department at (800) 645-3475, extension 2.

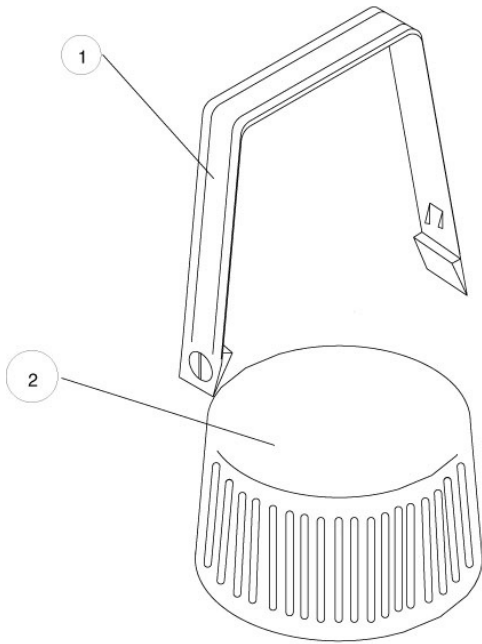
Loss of Suction:

If the GM 80 loses suction power during operation, there may be several reasons, the most likely of which is a full container. Suction loss is gradual as the container fills with debris. Check to see if there is any blockage or restriction in the hose.

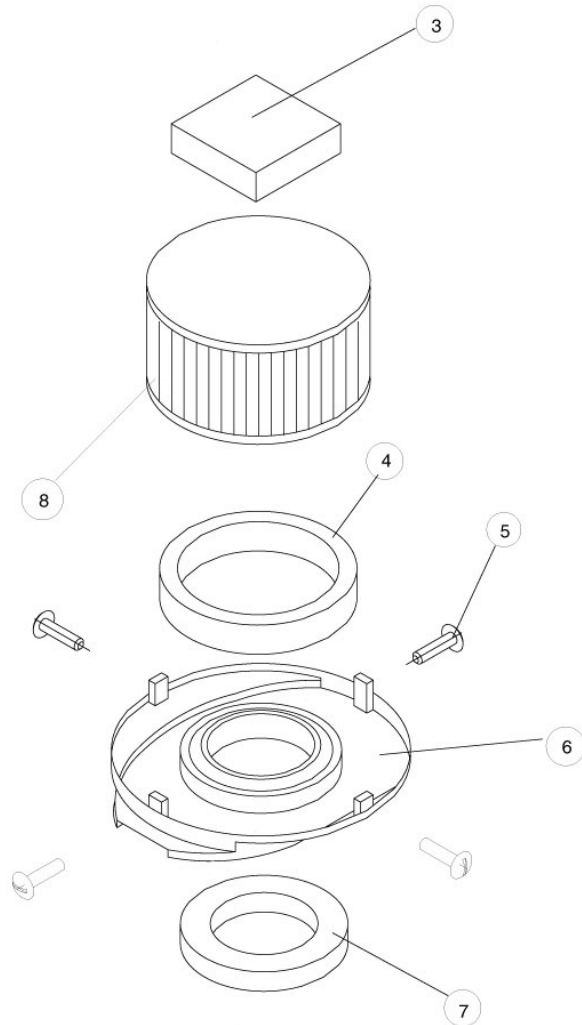
- 1) Check the condition of the main filter and microfilter (refer to photos) and determine whether there is an excessive loading of debris. If there is overloading in the main filter, you can shake it out. If the problem exists with the microfilter, including if it is loaded, it needs to be replaced. Call our Customer Service Department at (800) 645-3475, extension 2 to order a replacement.
- 2) If all fails, call our Customer Service Department at (800) 645-3475, extension 2.

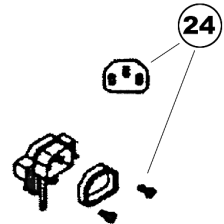
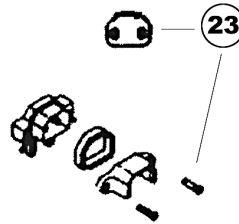
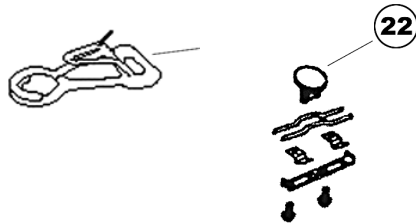
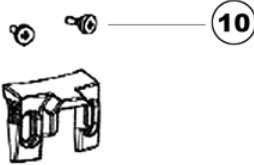
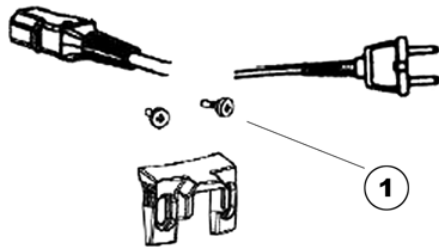


No.	Item No.	Description	Qty.
1	115446-11	UPPER CONTAINER W/ COTTON FILTER	1
2	121103-29	MOTOR COMPLETE	1
3	115447-10	LOWER CONTAINER	1
4	017091-00	MOTOR HOLD DOWN RING	1
5	017092-11	LATCH	2
6	805521	WASHER	4
7	815406	SCREW, 4MM X 5MM	4
8	705285-10	NUT, 4MM ESN	4
9	712366	SPRING CUP	2
10	017093-16	KEEPER	2
11	815407	SCREW, 4MM X 10MM	4
12	705265-10	NUT, 4MM ESN	2
13	815405	SCREW, 4MM X 5MM	2
14	815406	SCREW, 4MM X 5MM	2
15	815407	SCREW, 4MM X 10MM	2
16	805521	WASHER	4
17	017092-11	LATCH	2
18	017094-10	ADAPTER	2
19	017093-05	KEEPER	2
20	815412	SCREW, 4MM X 6MM	4
21	705265-10	NUT, 4MM ESN	4
22	815419	RING	1
23	815418	GASKET	1
24	815417	SOCKET	1
25	814312	SCREW	4



ITEM	DESCRIPTION	PT.NO.	QUANT
1	HANDLE	217377-01	1
2	FILTER COVER	717376-00	1
3	HOLD DOWN PAD	017247-01	1
4	SEAL,FOAM,HEPA	017009-01	1
5	SCREW	813950-00	4
6	FILTER BASE	821070-00	1
7	SEAL,FOAM,BOTTOM	017010-05	1
8	HEPA FILTER	017276-05	1



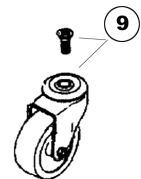
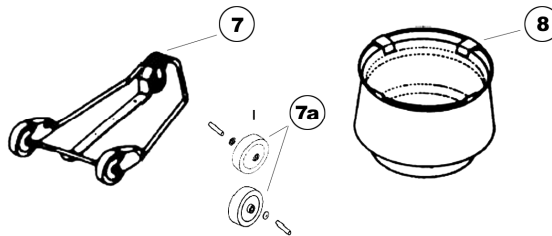
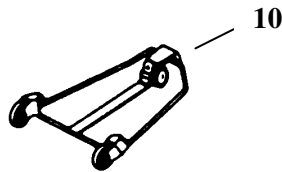
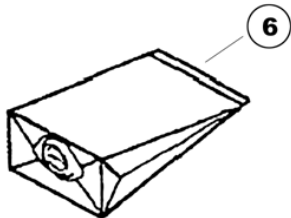
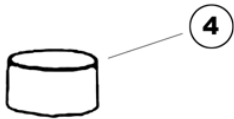
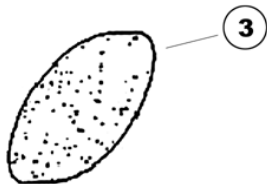
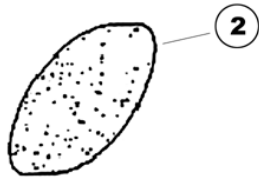
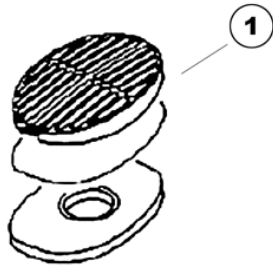


Power Cords

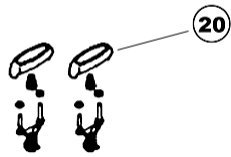
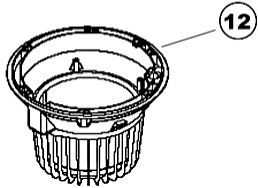
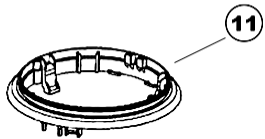
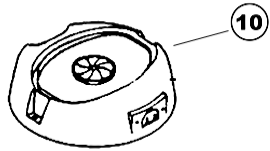
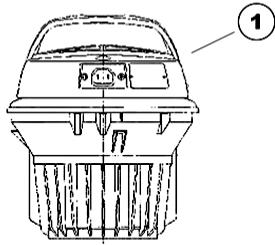
No.	Item No.	Description
1	21827400	9.3M CORD AWG18/3
1	21952200	9.3M CORD AWG18/2
3	21545400	7M CORD 2X1.0 CON/NO PLUG
3	21545700	10M CORD 3X1.0 CON/NO PLUG
3	21547900	10M CORD 2X1.0 CON/NO PLUG
10	22361000	BRACKET W/ SCREWS FOR CORD
11	22131600	BRACKET WITH SCREWS
13	82195800	CORD REALEASE FOR HANDLE
14	00191024	SOCKET W/ GROUNDED TERMINAL

Filter, Filter Bag and Trolley

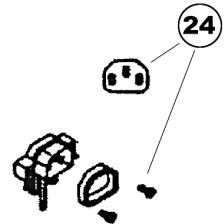
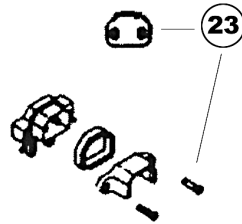
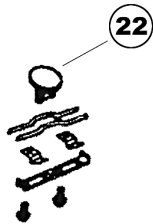
No.	Item No.	Description
1	21573001	EXHAUST WITH DIFFUSER
1	22394900	EXHAUST FILTER WITH MICRO STATIC DIFFUSER
2	11693700	DIFFUSER FILTERS 2 PCS
3	11641000	MICRO-STATIC FILTER
4	11730400	MOTOR PROTECTION FILTER
5	22132000	HANDLE COMPLETE
6	8162000	DUST BAG 6.5 LITERS 5 PCS
7	11490500	TROLLEY WITH SCREW GM 80 P
8	61543000	FILTER KIT COTTON GM 80
9	22384800	WHEEL KIT FOR TROLLEY
10	1154700	REMOVEABLE TROLLEY
7A	22394700	WHEELS FOR GM 80

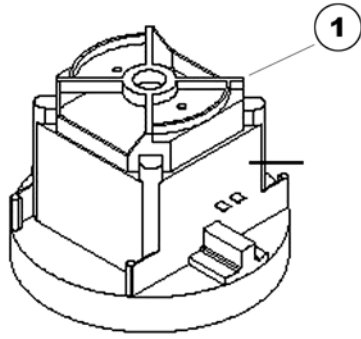


Motors



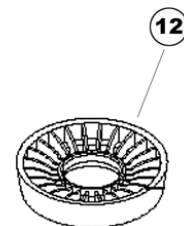
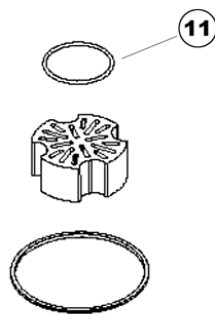
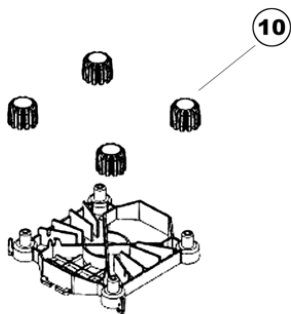
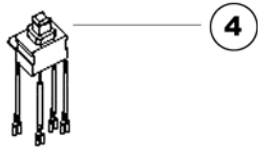
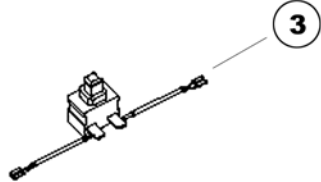
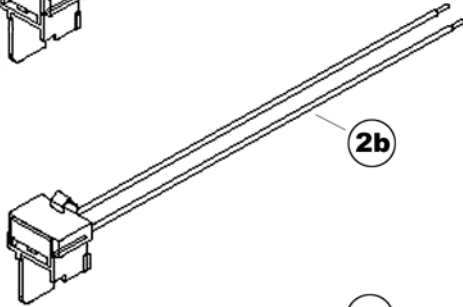
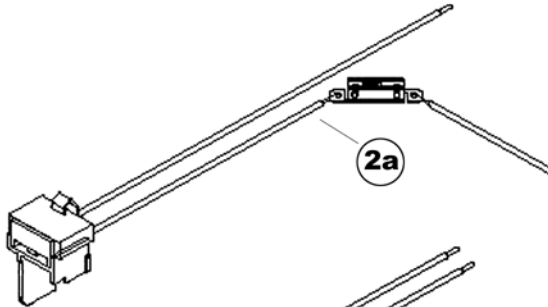
No.	Item No.	Description
1	12108129	MOTOR GSP 110-120V.UL
1	12108229	MOTOR GSP W/CORD UL
1	12108329	MOTOR GSPJ 110-120V.UL
1	12108429	MOTOR GSP 110-120V.UL
1	12108529	MOTOR GSPJ 110-120V.UL
1	12108629	MOTOR GSP W/CORD UL
1	12110129	MOTOR GMP 110-120V.UL
1	12110229	MOTOR GMP, FIXED CORD, UL
1	12110329	MOTOR GMPJ 110-120V.UL
10	22232301	TOP HOUSING FOR GS/GM MOTORS UL APPROVED
11	22410300	SUPPORT RING FOR UL APPROVED GS/GM MOTOR
12	22231201	BOTTOM HOUSING WITH VALVE FOR GM MOTOR UL APPROVED
20	22410500	ON/OFF DEVICE FOR GS/GM MOTORS
21	22410400	LOCKING DEVICE FOR HANDLE GS/GM MOTORS
22	20705300	THERMO VALVE COMPLETE WITH PART FOR GM/GS MOTOR HEAD
23	20705400	TWO PRONG SOCKET WITH PARTS FOR GM/GS MOTOR HEAD
24	20705500	GROUNDING SOCKET WITH PARTS FOR GM/GS MOTOR HEAD

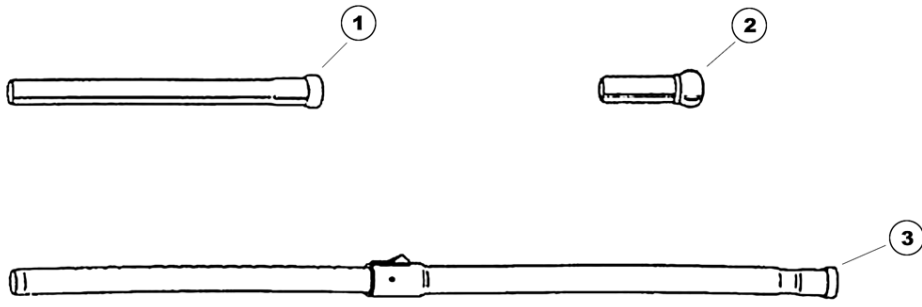




Internal Motor Components

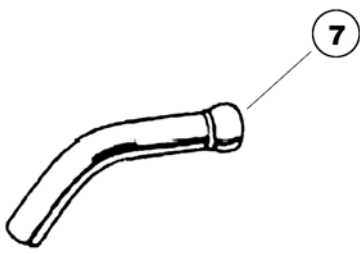
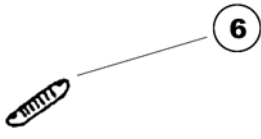
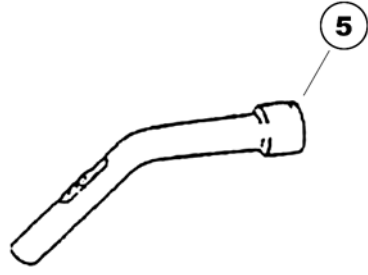
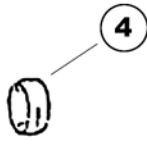
No.	Item No.	Description
1	12125001	MOTOR GSP 100-120V
1	12125002	MOTOR GSP 200-240V
1	12125003	MOTOR 110-120V
1	12125005	MOTOR 220-240V
2a	22130500	WIRE KIT/THERMO SWITCH FOR UL APPROVED MOTOR
2b	22130501	INTERNAL WIRE AND CAPACITOR
3	22131100	ON/OFF SWITCH 1-POLE
4	22131200	ON/OFF SWITCH 2-POLE
10	22231100	MOTOR SUSPENSION-PHILLIPS
11	22365300	SOUND ABSORBER AND GASKET
12	22399800	GASKET FOR INLET

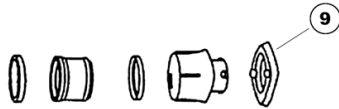
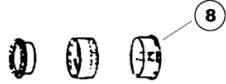
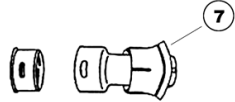
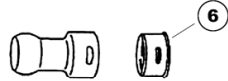
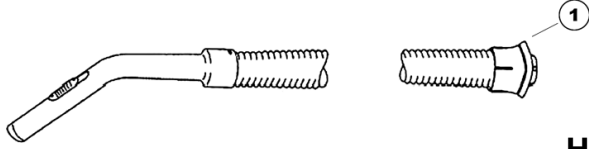




Extension Wand Parts

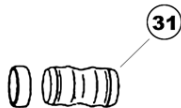
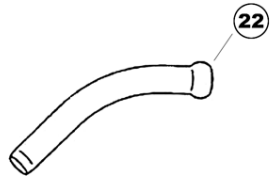
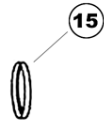
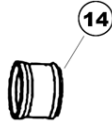
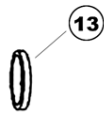
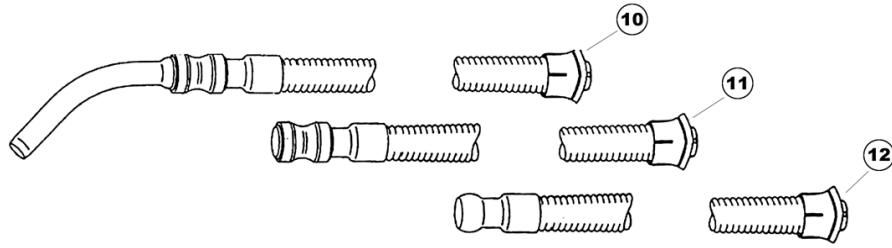
No.	Item No.	Description
1	11112401	TUBE EXTENSION 32MM CHROME STEEL
1	11182500	EXTENSION TUBE 32MM
1	11262400	TUBE 32MM ALUMINUM
2	11141900	STEEL TUBE 32MM
3	81906500	TUBE TELESCOPIC 32MM
4	81192100	FRICTION RING
5	21640503	CURVED TUBE 32MM PLAST
6	22351000	SHUTTER FOR CURVED TUBE
7	21112600	CURVED TUBE 32MM STEEL





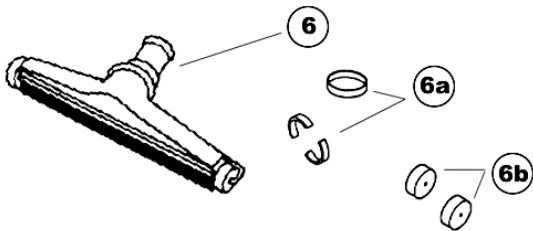
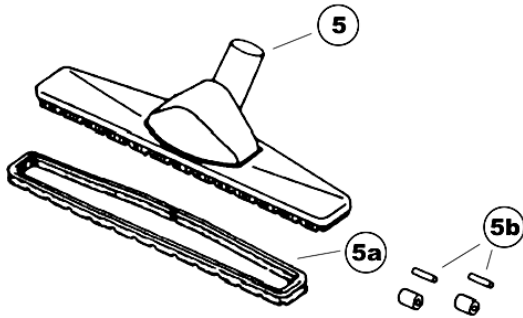
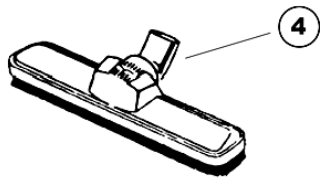
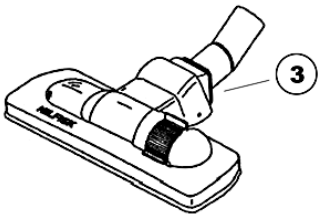
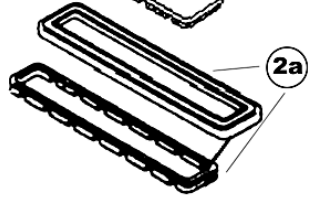
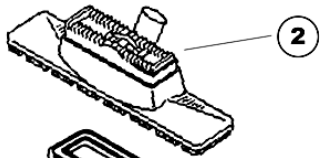
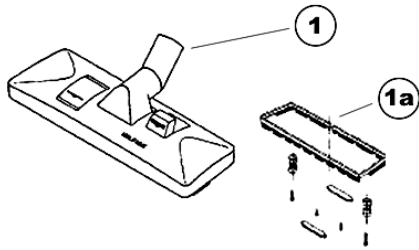
Hose and Connection Parts

No.	Item No.	Description
1	12041500	HOSE 38/32MM PLASTIC CURVED TUBE
2	22041400	HOSE 38/32MM PLASTIC WITH GS COUPLING
3	22351000	SHUTTER FOR CURVED TUBE 32MM (5 PIECES)
5	81813200	HOSE TO CUT IN LENGTH
6	22356400	PLAST BALL JOINT & BUSHING 32MM
7	22409100	GS COUPLING KIT & BALL
8	22350900	RINGS FOR 32MM HOSE
9	22340700	BAYONET COUPLING KIT 38MM



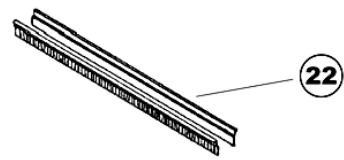
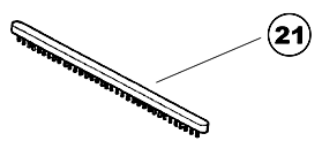
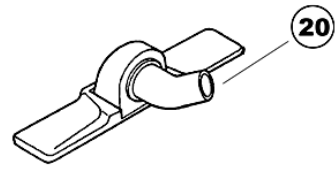
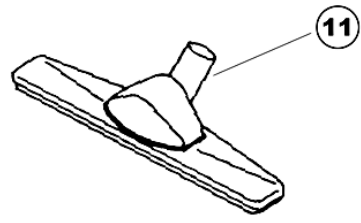
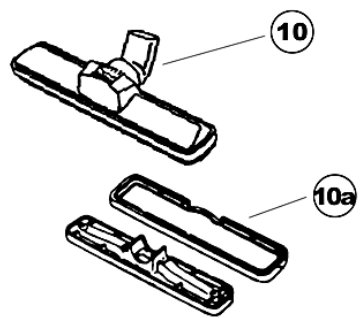
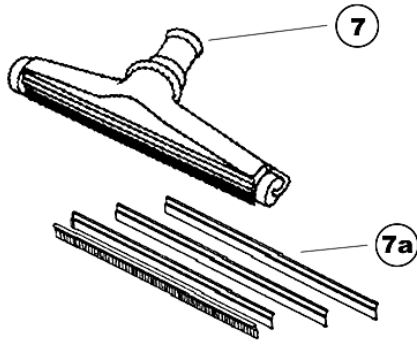
Hose and Connection Parts, continued

No.	Item No.	Description
10	12097500	HOSE 38/32MM PLASTIC
11	11543600	HOSE 38-32MM RUBBER
11	12097600	HOSE 38/32MM PLASTIC
12	11543700	HOSE 32/38 MM RUBBER
12	22097400	HOSE 38/32MM PLASTIC
13	81542500	RING 38MM
14	81542300	RING RUBBER 38MM FOR HOSE COUPLING
15	81542200	RING 38MM FOR GS AND GD HOSE COUPLING
22	21112600	CURVED TUBE 32MM STEEL
30	22351300	BALL JOINTS 32/38MM KIT
31	22344400	MUFF KIT 32MM BLACK + GRAY



Floor Nozzles

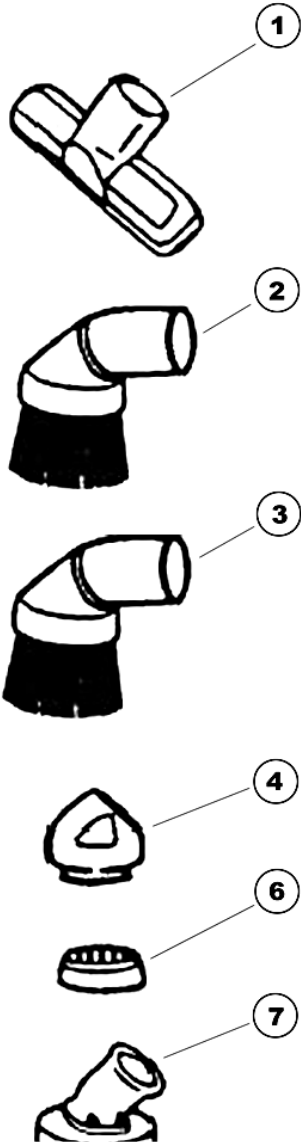
No.	Item No.	Description
1	11980300	NOZZLE COMBINATION 32MM
2	11450201	THREE-IN-ONE NOZZLE 305MM
3	12041000	ROLLER COMBINATION NOZZLE
4	11426700	BRUSH NOZZLE 32MM 280MM
5	11476301	BRUSH NOZZLE 32MM 400MM
6	1114220	FLOOR NOZZLE 300MM/32MM
6	12294400	FLOOR NOZZLE 300MM
1A	71986400	COMBINATION NOZZLE KIT
2A	22383400	BRUSH AND BUMPER FOR NOZZLE
5A	22383200	BRUSH FOR NOZZLE 11476301
6A	2238300	LOCKING RINGS FOR ALUMINUM KIT
5B	22383300	ROLLER WITH AXLE KIT
6B	22382900	WHEELS FOR NOZZLE KIT



Floor Nozzles, continued

No.	Item No.	Description
7	11505100	FLOOR NOZZLE 400MM/32MM
10	11276800	NOZZLE CARPET 32MM/280MM
11	11476200	NOZZLE CARPET 32 MM 400MM
20	00396347	FRENCH FLOOR NOZZLE HARD 32MM
20	00396348	FRENCH FLOOR NOZZLE SOFT 32MM
20	00396349	FRENCH FLOOR NOZZLE HARD 38MM
21	00396350	HARD BRUSH STRIP
21	00396351	32 MM SOFT BRUSH STRIP
22	22295100	BRUSH/RUBBER BLADES 300MM
7A	22383100	TWO RUBBER LIPS
7B	22295200	BRUSH/RUBBER BLADES 400MM
10A	22383500	BUMPER & BOTTOM FOR NOZZLE

Nozzles for Hard Floor and Carpet



No.	Item No.	Description
1	32043700	NOZZLE UPHOLSTERY GRAY
2	11276901	BRUSH ROUND GRAY 32MM NATURAL BRISTLES
3	22103600	BRUSH ROUND BLUE 32MM BLUE BRISTLES
4	81259101	SOCKET FOR BRUSH 11276901
6	81513700	RING F. DIVERSE BRUSHES
7	11142100	ROUND BRUSH 32MM
11	11140300	BRUSH NARROW 32MM
16	81530400	CREVICE NOZZLE 32MM
17	11530500	BRUSH RING FOR CREVICE NOZZLE
18	81141200	CREVICE NOZZLE 32MM
19	81140900	NOZZLE FLEXIBLE 32MM
20	81140902	FLEXIBLE NOZZLE 32MM
21	81141000	FLEXIBLE NOZZLE 32MM
22	81141101	FLEXIBLE NOZZLE 32MM
22	81932600	FLEXIBLE NOZZLE 32MM ANTISTATIC

TECHNICAL SPECIFICATIONS

Motor type, grounded	GMPJ
Tank capacity	3 1 /4 gallons
Voltage @ 60 Hz.	110-120/220 volt
Paper bag capacity	2 1 /4 gallons
Current draw	9 amps
Filter area**	1477 square inches
Power watts	1100
Dimensions (l x w x h)	14x12x16 inches
Waterlift*, max.	102 inches H2O
Weight without accessories	11 lbs.
Airflow, max.	87 cfm
Cord length	30 feet
Air performance	250 air watts

CONTACT INFORMATION

Nilfisk-Advance America, Inc.
300 Technology Drive
Malvern, PA 19355

Phone: (610) 647-6420
Fax: (610) 647-6427

questions@nilfisk-advance.com
www.pa.nilfisk-advance.com

